

FOR SALE

TITAN
FACTORY DIRECT

www.titanfactorydirect.com

\$113,420



10635 CHANDLER WAY MCLLOUD, OK 74851

DESCRIPTION

Located at Austin County Estates in Mcloud, OK with 3 bed, 2 baths and 1,493 sq. ft., this home is on 1 acre of land. There is no shortage of space in this home! Beautiful open floor plan, spacious kitchen, and walk-in closets in every room. This home is MOVE IN READY. Because it is such a steal, it isn't going to be available for very long, don't let another family move into YOUR home! To schedule a showing or to get more information call today at 855-550-6550!

HOUSE DETAILS

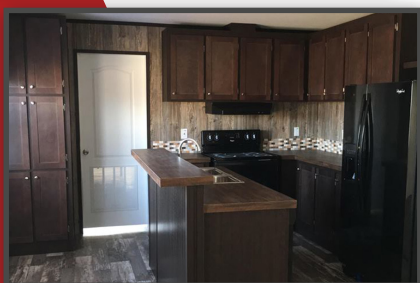
Year Built	Square Ft.	Bedrooms	Baths	Size
------------	------------	----------	-------	------

2017 1493 3 2 28x56

Lot Size	Community	Appliances	HOA	School District
----------	-----------	------------	-----	-----------------

1 acre N/A Included N/A Cordell ISD

CALL NOW 855.550.6550



SCANNOW
For more details.

READY TO MOVE IN



Disclaimer: The information presented is believed to be accurate at the time of posting; however, there may be some inaccurate or out of date material listed. Including make, model, size, year of manufacture, availability, floor plan, features, acreage, price and other information, are all subject to change without notice. RBI: 36609